

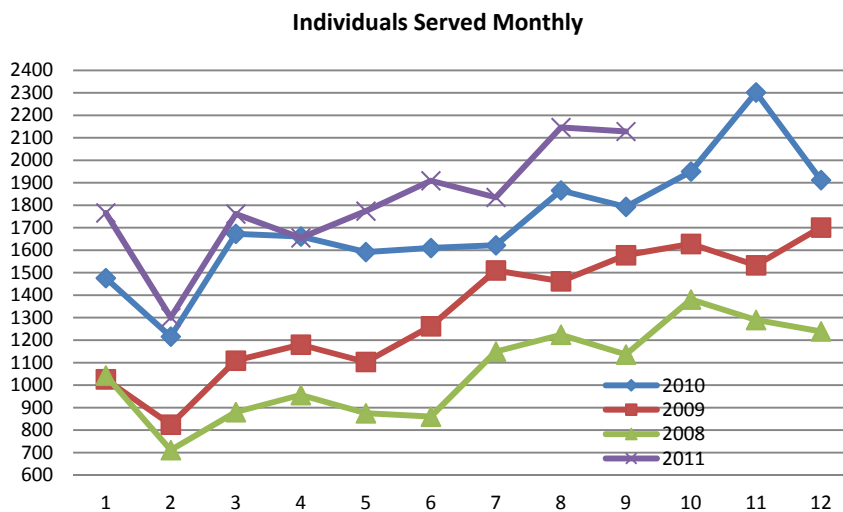


Contact: Shelly Napolitan
Volunteer Coordinator
Phone: 216.226.6466
shelly@lcsclakewood.org
www.lcsclakewood.org
14230 Madison Avenue

“This organization has enormous short and long-term impact on people’s lives, and it plays an important role in both support and empowerment,” according to **Chas D. Withers**, Lakewood resident and President of the LCSC Board of Directors.

About Lakewood Community Services Center: LCSC fills an **unduplicated** need in the following key areas. LCSC:

- Will serve **7,000** individuals in 2011 – that is **14%** of Lakewood’s population
- Distributes between **25,000** and **30,000** pounds of emergency food every month
- Has prevented over **450** Lakewood households from becoming homeless since November 2009
- Provided **10,000** pounds of free fresh produce to local families each month from July-October
- Volunteers will contribute over **5,000** hours of their time in support of LCSC in 2011



We’ve experienced a 24% Increase from 2008-09, a 29% increase from 2009-10, and we are on track to have a 29% increase from 2010-11. The average percentage of new clients per month is 10-12%

How YOU can help: Get involved!!

- Weekly volunteer opportunities include greeting our clients and registering them for food, working in the food warehouse, packing client grocery bags, and answering the Center's phone.
- You can volunteer every week during our open hours Monday through Friday 10:00a-1:45p and Wed 5:30-7:30p or give of your time to help with one of our many special projects.
- We count on our volunteers to help us improve the services we offer to our clients and to help us raise awareness of our mission throughout the community.

Here is what some of our volunteers have to say about their unique and valuable experience, *"Our philosophy is to err on the side of the client", "I like the way it's organized...there's a nice flow to it", "clients are genuinely appreciative...they are nice people", "when I leave here, I feel like I've accomplished something."* With only three full-time and three part-time staff, our volunteers enable us to provide the high level of comprehensive service that has become the hallmark of LCSC. Many in our community are experiencing conditions that they never thought possible. Please help us help our neighbors in need!!

Take Action: Call (216.226.6466) or email (shelly@lcsclakewood.org) to:

- **Schedule a time to** come **in** to observe LCSC in action!
- **RSVP** – attend a group presentation and Q & A with our **Executive Director, Trish Rooney** and **current volunteers** for an up close and personal look at what goes on in our great facility!
 - Thursday Oct 27 7pm at LCSC *Coffee and refreshments served
 - Tuesday Nov 8 7pm at LCSC *Coffee and refreshments served

Past the beggar and the suffering walks he who asks, 'Why, oh God, do you not do something for these people?' To which God replied, 'I did do something, I made you.'

↪ Old Sufi Saying